

# Unite Executive Council Elections

---

START 23 MARCH END 27 APRIL

---

vote

Members  
United



Getaneh  
Tefaye

Membership No: 14927708  
Branch: LE/382



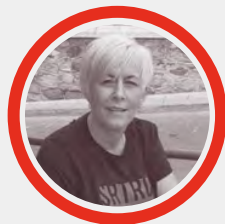
Mark  
Dunne

Membership No: 20081564  
Branch: LE/7113L



Owen  
Scarlett-  
Gilpin

Membership No: 14946378  
Branch: LE/806



Paula  
Brennan

Membership No: 15142768  
Branch: LE/1267

# London and Eastern needs strong, member-led voices, to fight and win for Members

**The London & Eastern Region** is by far the biggest in our Union and we want to ensure that whatever your Sector, and whether you work in a large or small workplace or even as an individual member, there is better communication and better support during challenging times.

**We pledge to end the disruptive division at the top of our Union and ensure power is always in the hands of the membership.**

We have all served on senior regional committees and combines and we all now want to help create a cohesive and united Executive to build:

- **a fighting back and organising union** where it is always our members and their reps who determine priorities and strategy
- **a united Union** opposing discrimination and working for equality for all its members
- **a financially sound Union** with resources at the coal face, where any financial or ethical wrongdoing is exposed and those responsible held to account.
- **a Union that punches its weight politically.** It's only our bosses and the Establishment that benefit when our Union abandons politics
- **a Union that recognises the global nature of our struggles,** standing in solidarity with workers the world over.
- **a Union that takes the message** about the collective strength that trade unionism provides, **to the next generation**

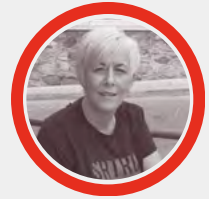
**If elected, we will ensure power is in the hands of the members**

**VOTE**  
**PAULA, OWEN, MARK AND GETANEH**  
**ENERGY & UTILITIES**



# VOTE PAULA, OWEN, MARK AND GETANEH LONDON AND EASTERN

**Paula** - workplace rep and Branch Equalities officer in our Not for Profit Sector, with vast experience on senior Industrial and Women's Committees, including the current Executive. If re-elected, I will continue to always support members in struggle and ensure our Region has the strong voice it needs, countering the disappointments of this Labour government and the threats posed by the Far Right.



**Paula  
Brennan**



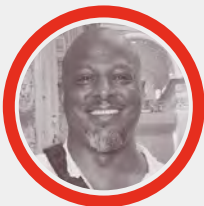
**Owen  
Scarlett-Gilpin**

**Owen** - 22 years as a rep in the Road Transport sector, currently chairing various Regional committees and Combines. I believe our Union has lost its sense of duty to its members and in many respects needs to get back to basics, with better training for reps, more effective communications, and a clear focus on members' priorities.

**Mark** - a mental health nurse and union activist and rep for 25 years. I have built an effective union presence in my Trust, given my members a strong voice and led strike action over pay. I believe that our Union must be run by the members for the members, that the Executive must be their voice and that the Administration must be held fully to account.



**Mark Dunne**



**Getaneh  
Tesfaye**

Getaneh - shop steward in a large London bus garage with wide-ranging Committee experience. I have led many successful campaigns, saving services and jobs, delivering improvements in welfare facilities and creating a more inclusive and respectful working environment for members. If elected to the EC, I will continue to represent members across all sectors with integrity, transparency and determination.

# Members United

## **IRELAND**

Marie Casey (MN 13976326, RI/B8002)

## **SCOTLAND**

Stephen Payne (MN 14990580, SC/21)

Sylvia Stewart (MN 20418232, SC/175)

## **WALES**

David Imre (MN 21093383, WA/B6075)

Kait Duerden (MN 30065375, WA/B7049)

## **WEST MIDLANDS**

Jackie Goode (MN 15395924, WM/7116)

Patrick Russell (MN 21097293, WM/6802)

Ryan Hodgson (MN20784310, WM/7186)

## **EAST MIDLANDS**

RaTiq Moosa (MN 32686082, EM/LE19)

Dawn Borthwick (MN 14366511, EM/DE78)

## **NORTH EAST Y&H**

Michelle Smith (MN 33154297, NE405/19)

Richard Wileman (MN 32714945, NE/400/5)

## **NORTH WEST**

Chris Neville (MN 20797948, NW/70209)

Sarah Mountaine (MN 20655718, NW/119)

## **LONDON & EASTERN**

Getaneh (Gee) Tesfaye (MN 14927708, LE/382)

Owen Scarlett-Gilpin (MN 14946378, LE/806)

Paula Brennan (MN 15142768, LE/1267)

MARK DUNNE (MN 20081564, LE/7113L)

## **AUTOMOTIVE INDUSTRIES**

Craig McDonald (MN 31553043, NE/200/7)

Debbie Dempsey (MN 30779134, LE/1115M)

## **CPPT**

Cliff Bowen (MN 13439143, SC/166/FPS)

## **CIVIL AIR TRANSPORT**

Wayne Simmons (MN 20953271, LE/1365)

## **CYWNFP**

Kingsley Abrams (MN 32741831, LE/1111)

## **DOCKS, RAIL FERRIES & WATERWAYS**

Richard Crease (MN 13231881, SE/6125)

## **EDUCATION**

Ken Drury (MN 30990807, NW/0398M)

## **EMS**

Martin Foster (MN 30786032, NE205/3)

## **ENERGY & UTILITIES**

Mark Jones (20522288, LE/0028)

## **FDA**

Matt Gould (MN 32114548, NW/119)

Monique Mosley (20912632, NE100/53)

## **GOVERNMENT, DEFENCE, PRISONS**

Keith Wilmer (MN 32426920, EM/NG58)

## **GPMIT**

Tom Murphy (MN 32684856, LE/7031L GPM)

## **HEALTH**

Ian Evans (MN 30614745, SE/6016)

## **LOCAL AUTHORITIES**

Brian Robertson (MN 20154353, SC/133/86)

Clare Rudge (MN 20620054, WM/7186)

## **PASSENGER TRANSPORT**

Patricia Davis (MN 14268646, LE/381)

Paul Ainsworth (MN 14939560, LE/382)

## **ROAD, TRANSPORT & COMMERCIAL**

Andy Prickett (MN 20074377, SE/60-63)

Davy McCord (MN 20232561, NI/B0029)

## **UCATT**

Stuart Grice (MN 52550786, EM/UE100)

Thomas Glavin (MN 30969540, SC600/16)

## **EQUALITIES**

### **Retired:**

Trevor Vaughan (30616098, NW/9602M)

### **Disabled:**

Dean Collins (MN 20298943, EM/DE32)

### **BAEM:**

Mohammed Ajaz (MN 21542311, WM/7069)

### **LGBT+:**

Lottie Mannion (MN 31517681, EM/DE78)

