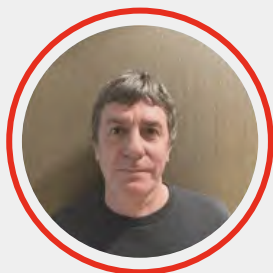


# Unite Executive Council Elections

START 23 MARCH END 27 APRIL

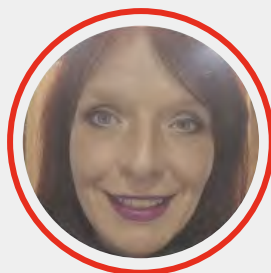
vote

Members  
United



Matt Gould

Membership No: 32114548  
Branch: NW/119 United  
Biscuits Branch



Monique  
Mosley

Membership No: 20912632  
Branch: NE100/53 - North  
East, Yorkshire & Humberside

## Food Drink and Agriculture

MEMBERS UNITED will grow our membership, build a fierce industrial presence, and ensure a strong **Member led** voice that always stands up for workers.

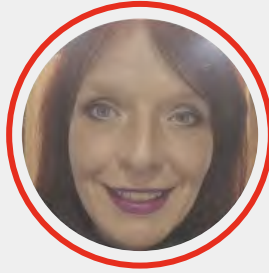
To see all the Members United candidates

[membersunited.uk](https://membersunited.uk)



# **VOTE MONIQUE MOSLEY**

## **FOOD DRINK & AGRICULTURE**



**Our Sector needs strong, member-led voices, to fight and win for Members**

**I am asking for your vote to be your Executive Council representative for the Food, Drink and Agriculture (FDA) sector.**

**My work is rooted in defending members' rights and ensuring that health, safety, dignity, and respect at work are non-negotiable.** I have been a committed Unite member, a Senior Workplace, and Health and Safety Representative since 2018.

**I serve on the Regional Industrial Sector Committee and as a Vice-Chair on the National Industrial Sector Committee.** Through these roles, I contribute to policy development, reflecting the real experiences and challenges faced by members across food, drink, and agriculture. Internationally, I represent Unite as a Vice-Chair of the EFFAT Women's Committee and as a member of the IUF Executive Committee.

**These roles have strengthened my commitment** to equality, solidarity, and international cooperation, particularly in challenging exploitation and unsafe practices throughout global supply chains.

**If elected to the Executive Council, I will:**

- Promote transparent and accountable union governance
- Support robust scrutiny of leadership
- Defend democratic union principles
- Work to unite our union and rebuild collective strength
- Ensure members are informed of changes promptly

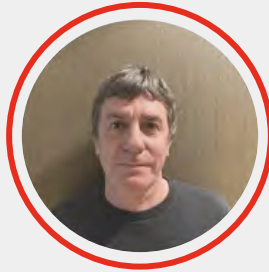
**Division weakens us; unity is essential if we are to protect members and win real improvements at work.**

**If elected, I will help ensure power is in the hands of the members.**



# **VOTE MATT GOULD**

## **FOOD DRINK & AGRICULTURE**



I am seeking your support for a third term on Unite's Executive Council (EC), representing members in the Food, Drink and Agriculture (FDA) sector.

**After over 35 years working in this sector, I remain as committed as ever to standing up for the workers who keep this country fed everyday.** Our sector is essential, yet too often our member's contribution is taken for granted.

**I'm standing again because experienced, informed representation matters more than ever.** My experience spans the full breadth of our sector — Food and Drink Manufacturing, Agriculture, Logistics, and Distribution. For decades I've witnessed the pressures of persistent skills shortages, seasonal work, increasing Health and Safety risks, restructuring, automation, and the impact of climate and trade policy on jobs. **I understand how these challenges affect members.**

**This knowledge guides my EC work.** I've consistently pushed for strong collective bargaining, effective workplace organisation, and real, achievable outcomes improving pay, conditions, and job security, rather than empty promises or headline-driven gestures.

**Experience matters on the EC,** especially at a time when FDA members face significant challenges. During my past two terms, I've worked hard to ensure that the voices of FDA members are heard at the highest levels of Unite. **If elected, I will help ensure power is in the hands of the members. I ask for your support to continue representing you with experience, honesty, and determination.**



# Members United

## **IRELAND**

Marie Casey (MN 13976326, RI/B8002)

## **SCOTLAND**

Stephen Payne (MN 14990580, SC/21)

Sylvia Stewart (MN 20418232, SC/175)

## **WALES**

David Imre (MN 21093383, WA/B6075)

Kait Duerden (MN 30065375, WA/B7049)

## **WEST MIDLANDS**

Jackie Goode (MN 15395924, WM/7116)

Patrick Russell (MN 21097293, WM/6802)

Ryan Hodgson (MN20784310, WM/7186)

## **EAST MIDLANDS**

Raffiq Moosa (MN 32686082, EM/LE19)

Dawn Borthwick (MN 14366511, EM/DE78)

## **NORTH EAST Y&H**

Michelle Smith (MN 33154297, NE405/19)

Richard Wileman (MN 32714945, NE/400/5)

## **NORTH WEST**

Chris Neville (MN 20797948, NW/70209)

Sarah Mountaine (MN 20655718, NW/119)

## **LONDON & EASTERN**

Getaneh (Gee) Tesfaye (MN 14927708, LE/382)

Owen Scarlett-Gilpin (MN 14946378, LE/806)

Paula Brennan (MN 15142768, LE/1267)

MARK DUNNE (MN 20081564, LE/7113L)

## **AUTOMOTIVE INDUSTRIES**

Craig McDonald (MN 31553043, NE/200/7)

Debbie Dempsey (MN 30779134, LE/1115M)

## **CPPT**

Cliff Bowen (MN 13439143, SC/166/FPS)

## **CIVIL AIR TRANSPORT**

Wayne Simmons (MN 20953271, LE/1365)

## **CYWNFP**

Kingsley Abrams (MN 32741831, LE/1111)

## **DOCKS, RAIL FERRIES & WATERWAYS**

Richard Crease (MN 13231881, SE/6125)

## **EDUCATION**

Ken Drury (MN 30990807, NW/0398M)

## **EMS**

Martin Foster (MN 30786032, NE205/3)

## **ENERGY & UTILITIES**

Mark Jones (20522288, LE/0028)

## **FDA**

Matt Gould (MN 32114548, NW/119)

Monique Mosley (20912632, NE100/53)

## **GOVERNMENT, DEFENCE, PRISONS**

Keith Wilmer (MN 32426920, EM/NG58)

## **GPMIT**

Tom Murphy (MN 32684856, LE/7031L GPM)

## **HEALTH**

Ian Evans (MN 30614745, SE/6016)

## **LOCAL AUTHORITIES**

Brian Robertson (MN 20154353, SC/133/86)

Clare Rudge (MN 20620054, WM/7186)

## **PASSENGER TRANSPORT**

Patricia Davis (MN 14268646, LE/381)

Paul Ainsworth (MN 14939560, LE/382)

## **ROAD, TRANSPORT & COMMERCIAL**

Andy Prickett (MN 20074377, SE/60-63)

Davy McCord (MN 20232561, NI/B0029)

## **UCATT**

Stuart Grice (MN 52550786, EM/UE100)

Thomas Glavin (MN 30969540, SC600/16)

## **EQUALITIES**

### **Retired:**

Trevor Vaughan (30616098, NW/9602M)

### **Disabled:**

Dean Collins (MN 20298943, EM/DE32)

### **BAEM:**

Mohammed Ajaz (MN 21542311, WM/7069)

### **LGBT+:**

Lottie Mannion (MN 31517681, EM/DE78)

### **WOMEN**

Tricia James (MN 13292209, SE/6194)



SCAN ME